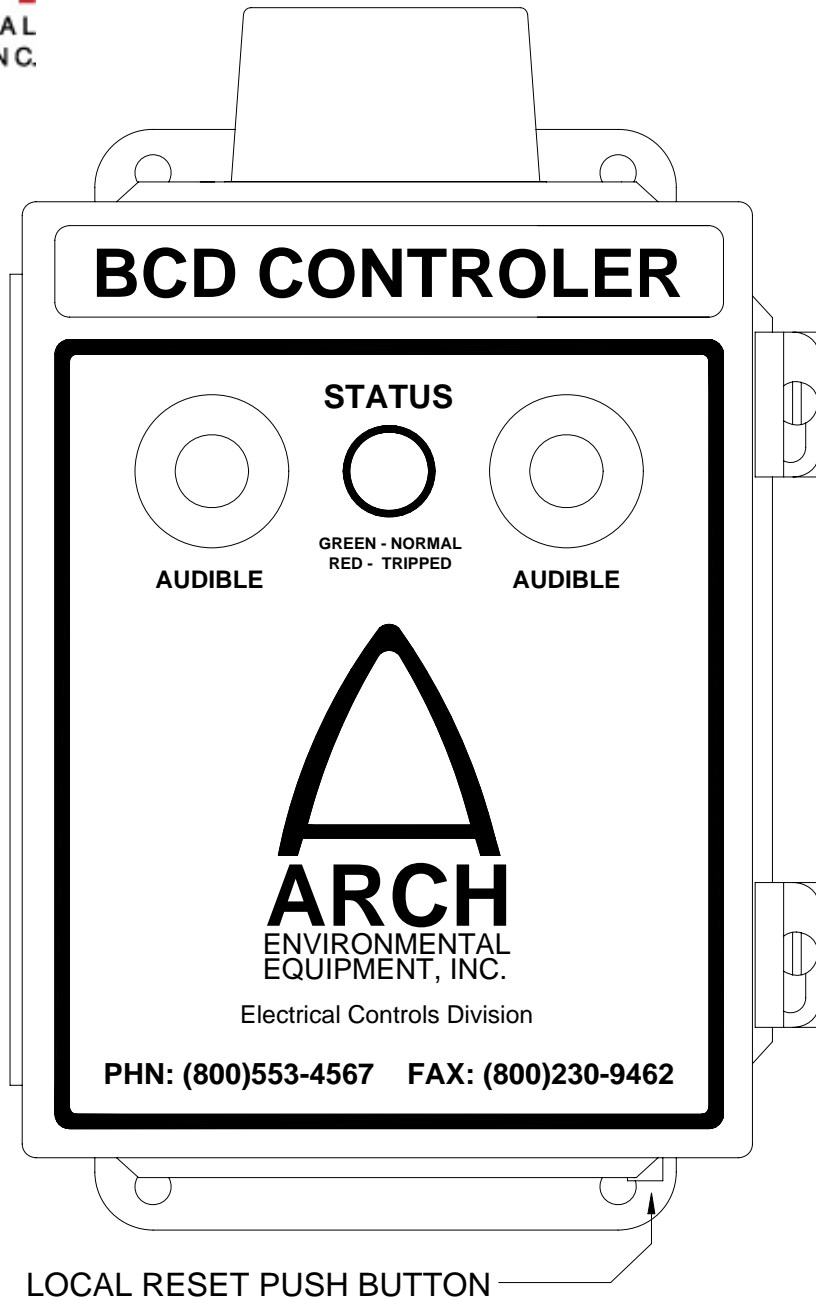




# BLOCKED CHUTE CONTROLLER OPERATION MANUAL



## **E1CMC0000BCD BLOCKED CHUTE CONTROLLER**

---

The BCD Controller is an easy to use controller, equipped with audio and visual alarms along with a relay output, for blocked chute detection.

### **CONNECTIONS:**

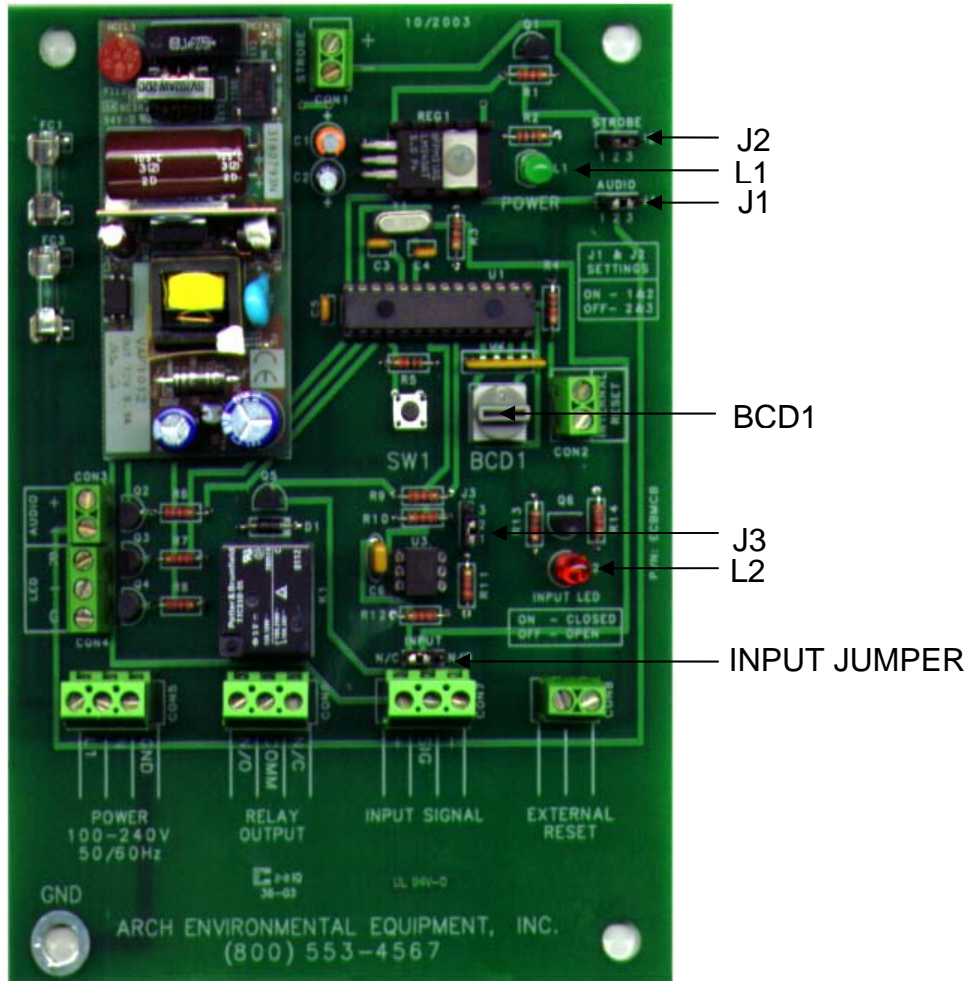
- 1) Connect de-energized 100 – 240VAC 50/60 Hz power to the power terminal in the lower left corner of the circuit board.
- 2) Connect the (normally open or normally closed) dry contact of the field device to the input signal terminals (+) and (SIG). Do not use the (-) of the input signal terminal.
- 3) Connect to the output relay if desired.
- 4) Connect to the external reset terminal block if external reset is needed. There is a local reset button on the bottom of the enclosure.
- 5) Energize the power to the controller.

### **OPERATION:**

1. Status LED on the front of the enclosure will illuminate Green for a none trip condition, red for a trip condition, and flashing red when the reset button has been pressed once to silence the audio. The reset button will need to be pressed a second time to clear the trip condition.
2. Set rotary switch BCD1 to desired trip delay. 0 – No Delay or 1-9 Seconds.
3. J1 and J2 allow the audio and strobe to be disabled.

If you have any further questions concerning the BCD, call Arch Environmental at (800) 553-4567.

# PCB LAYOUT



## PCB CONNECTIONS

POWER:	100-240 VAC 50/60 Hz.
RELAY OUTPUT:	DRY CONTACT (1) N/O AND (1) NC.
INPUT SIGNAL:	LOOPS 12 VDC THROUGH FIELD DEVICE THAT HAS EITHER A N/O OR N/C CONTACT.
EXTERNAL RESET:	ALLOWS FOR EXTERNAL RESET WITH A NORMALLY OPEN . MOMENTARY PUSH PUTTON. <b><u>DO NOT APPLY VOLTAGE.</u></b>

## JUMPER SETTINGS

J1	ENABLE / DISABLE AUDIO
J2	ENABLE / DISABLE STROBE
J3	SET AT FACTORY <b><u>DO NOT MOVE</u></b>
INPUT	SELECTS WEATHER THE INPUT IS N/O OR N/C

## VISUAL INDICATIONS

L1 – POWER INDICATION  
L2 – INPUT LED

## OUTPUT RELAY RATING

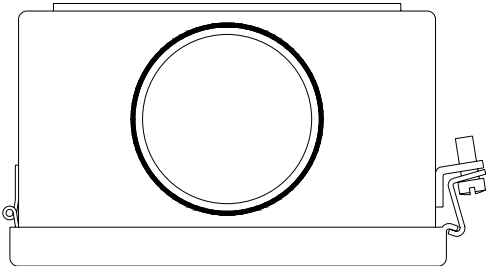
12A @ 120VAC | 10A @ 240VAC | 10A @ 24 VDC

## USER SELECTABLE

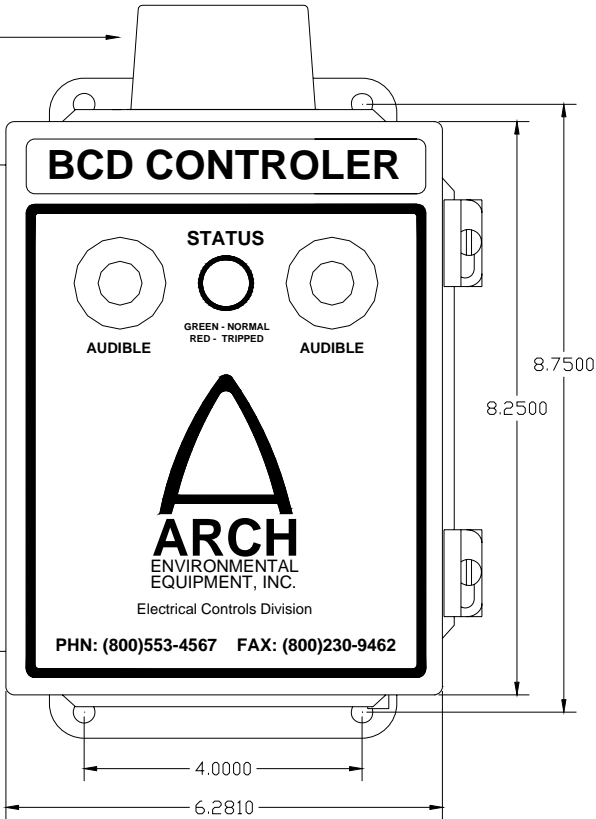
BCD1 SELECTS THE TRIP DELAY. 0 = NO DELAY | 1-9 SECONDS

# ENCLOSURE LAYOUT

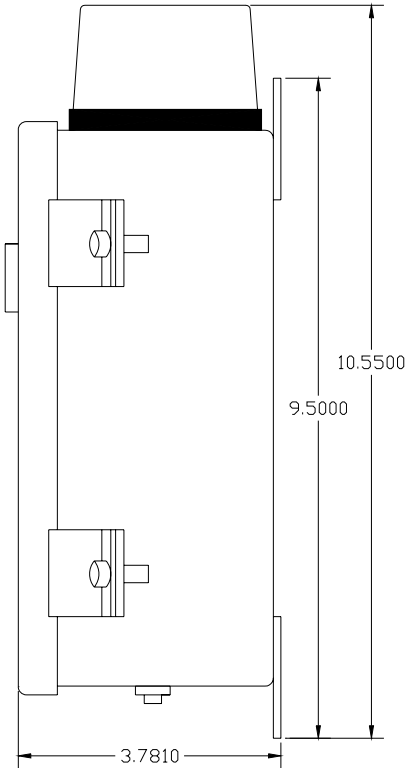
TOP VIEW



RED STROBE LIGHT

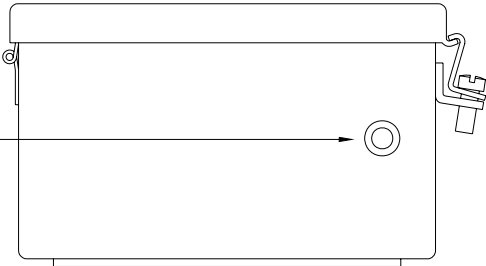


FRONT VIEW



SIDE VIEW

RESET BUTTON



BOTTOM VIEW