

Belt Scale Worksheet

**This worksheet is required for quotations and is needed before orders can be processed.
Please fill out a photocopy and fax to Arch Environmental Equipment at 800-230-9462.**

Company: _____ Date: _____

Address: _____

City: _____ State: _____ Zip: _____

Phone: _____ Fax: _____

Contact: _____ Project: _____

Conveyor Data (Conveyor Number: _____)

Material Conveyed: _____ Operational Temperature Range: _____

Material Type: Wet Dry What Operation is Taking Place? Mining Plastics Timber Other

Material Density: _____ (weight per cubic foot - approximate) _____

Belt Width: _____ Belt Type (Brand/Model): _____

Belt Speed: _____ Fixed: Variable: Belt Length:

Tons per Hour: Max _____ ☐ Long ☐ Short ☐ Metric

Conveyor Angle or Rise per Foot: _____ Take-Up Type: _____

Power Available at Installation Point: ☐ 115 VAC ☐ 220 VAC ☐ 50 HZ ☐ 60 HZ

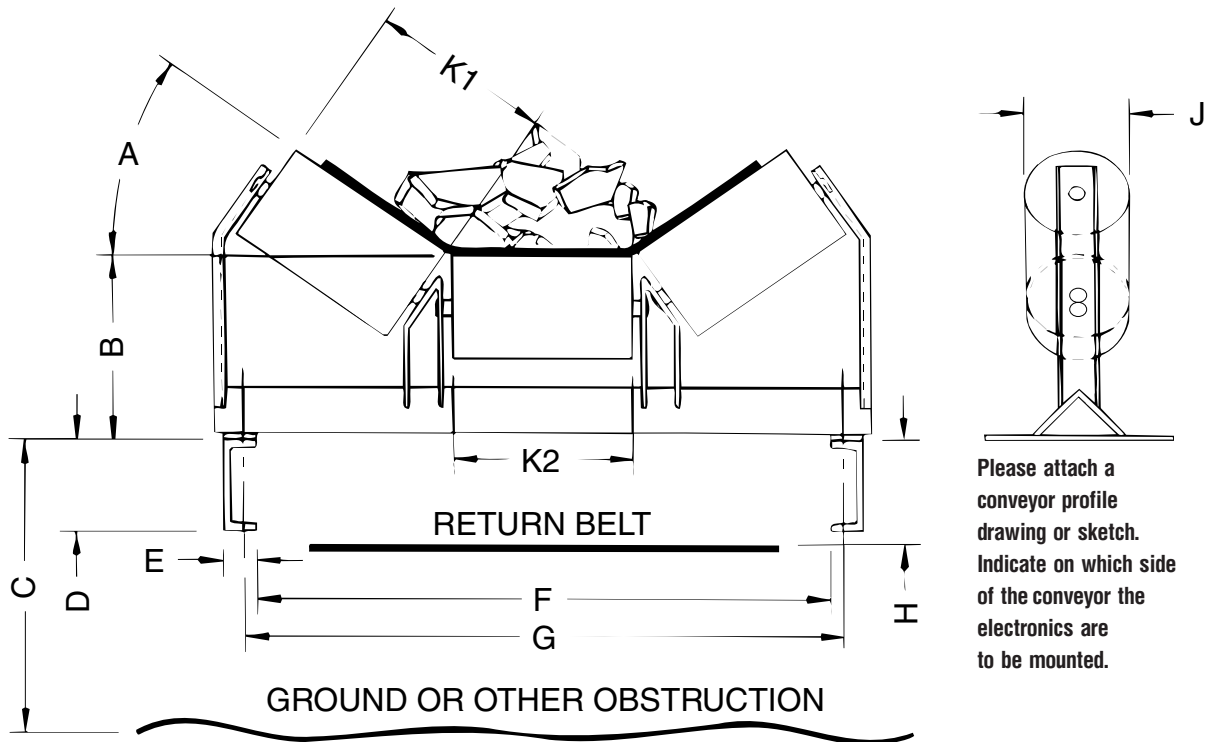
Optional Signal Output: 4-20 mA, Pulse: _____ Enclosure: ☐ NEMA 9 ☐ NEMA 12

Spacing Between Idlers in Scale Area: _____ Factory Modified ☐

Distance Between Scale & Integrator: _____

Belt Scale Worksheet

(Continued) Page 2



Idler Type:

- ☐ Troughing
- ☐ Picking/Feeder
- ☐ Rigid Mine
- ☐ Wire Rope
- ☐ Catenary

Scale Placement:

- ☐ Above Ground
- ☐ Below Ground

Options:

- ☐ Remote Display
- ☐ Chart Recorder
- ☐ Graphic Remote
- ☐ HP Scale
- ☐ SC Scale
- ☐ Idler for SC Scale
- ☐ LD Display
- ☐ Large Display

A) Troughing Angle: _____

B) Center Roll Height: _____

C) Ground Clearance: _____

D) Stringer Height: _____

E) Flange Width: _____

F) Structure Clearance: _____

Idler Manufacturer: _____

G) Bolt Hole Centers: _____

H) Clearance to Belt: _____

J) Roller Diameter: _____

CEMA Rating: _____

K1) Wing Roll Length: _____

K2) Center Roll Length: _____

Special Operation Conditions:
